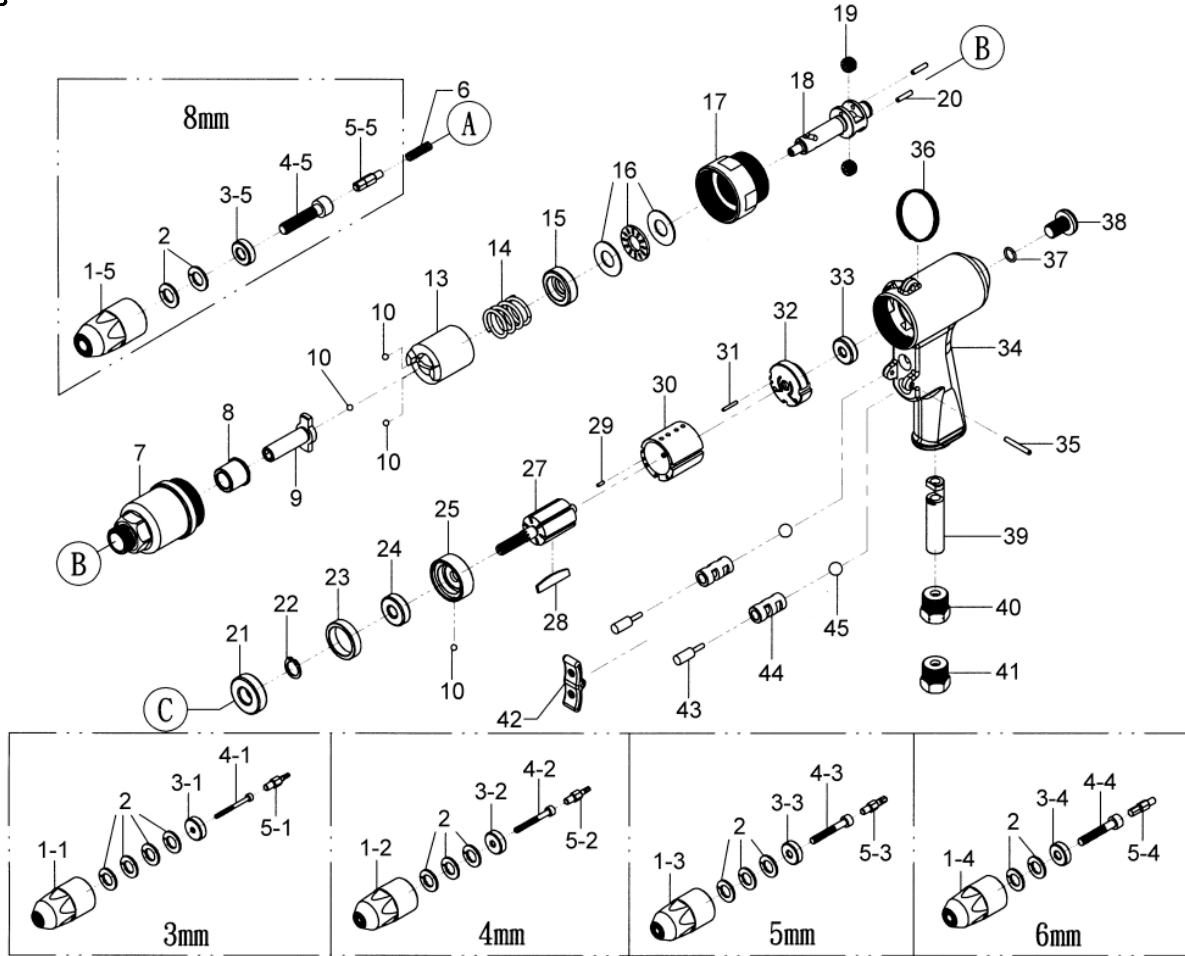




# GISON Pneumatic Tools

## GP-836LC Air Pull Nut Setter 3-8mm, 2500 rpm



### PARTS LIST

✳ : Consuming Part

Item No.	Part No.	Description	Qty.	Item No.	Part No.	Description	Qty.
1-1	836LC01-1	Pulling Head ( 3mm)	1	16	836LC16	Ball Bearing (1226)	1
1-2	836LC01-2	Pulling Head ( 4mm)	1	17	836LC17	Gear Ring	1
1-3	836LC01-3	Pulling Head ( 5mm)	1	18	836LC18	Gear Seat	1
1-4	836LC01-4	Pulling Head ( 6mm)	1	19	836LC19	Gear	2
1-5	836LC01-5	Pulling Head ( 8mm)	1	20	836LC20	Pin (ø 3x14)	2
2	836LC02	Ball Bearing	2	21	836LC21	Ball Bearing (6001)	1
3-1	836LC03-1	Washer	1	22	836LC22	Stopping Wheel	1
3-2	836LC03-2	Washer	1	23	836LC23	Washer	1
3-3	836LC03-3	Washer	1	24	836LC24	Ball Bearing (608)	1
3-4	836LC03-4	Washer	1	25	836LC25	Front Plate	1
3-5	836LC03-5	Washer	1	27	836LC27	Rotor	1
4-1	836LC04-1	Screw	1	28	836LC28	Rotor blade	6
4-2	836LC04-2	Screw	1	29	836LC29	Pin (ø 2x6)	1
4-3	836LC04-3	Screw	1	30	836LC30	Cylinder	1
4-4	836LC04-4	Screw	1	31	836LC31	Pin (ø 2x14)	1
4-5	836LC04-5	Screw	1	32	836LC32	Rear Plate	1
5-1	836LC05-1	Driver Bit	1	33	836LC33	Ball Bearing (626)	1
5-2	836LC05-2	Driver Bit	1	34	836LC34	Handle	1
5-3	836LC05-3	Driver Bit	1	35	836LC35	Pin (ø 3x24)	1
5-4	836LC05-4	Driver Bit	1	36	836LC36	Hook	1
5-5	836LC05-5	Driver Bit	1	37	836LC37	O-Ring (P8x1.5)	1
6	836LC06	Spring	1	38	836LC38	Screw	1
7	836LC07	Front Cap	1	39	836LC39	Air Hose	1
8	836LC08	Bushing	1	40	836LC40	Air Inlet (18)	1
9	836LC09	Anvil	1	41	836LC41	Air Inlet (19)	1
10	836LC10	Steel Ball (ø 4mm)	4	42	836LC42	Switch Lever	1
13	836LC13	Hammer	1	43	836LC43	Rod	2
14	836LC14	Spring	1	44	836LC44	Bushing	2
15	836LC15	Washer	1	45	836LC45	Plastic Ball	2