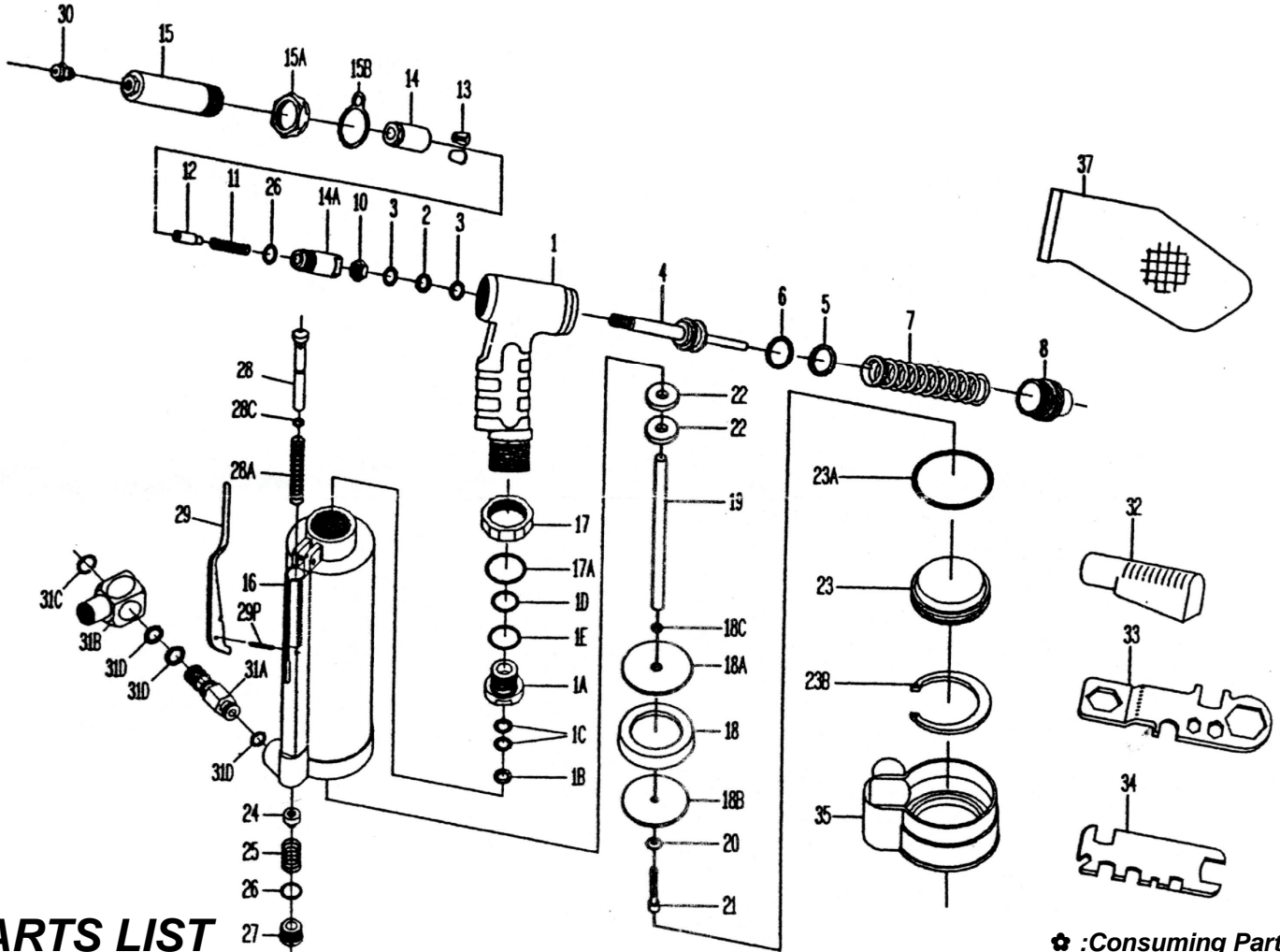


GISON Pneumatic Tools

GP-484L Air Hydraulic Riveter



PARTS LIST

✳ : Consuming Part

No.	Part No.	Description	Qty.	No.	Part No.	Description	Qty.
01	484L01	Hydraulic Section	1	21	484L21	Lock Screw	1
01A	484L01A	Plunger Rod Guide	1	22	484L22	Bumper Ring	2
01B	484L01B	Back-Up Ring	1	22A	484L22A	Piston Ass'y. (18-22) (ns)	1
01C	484L01C	O-Ring	2	23	484L23	Air Cylinder Cap	1
01D	484L01D	O-Ring	1	23A	484L23A	O-Ring	1
01E	484L01E	O-Ring	1	23B	484L23B	Retainer Ring	1
02	484L02	Back-Up Ring	1	24	484L24	Throttle Valve Body	1
03	484L03	O-Ring	2	25	484L25	Throttle Valve Spring	1
04	484L04	Hydraulic Plunger	1	26	484L26	O-Ring	2
05	484L05	Back-Up Ring	1	27	484L27	Valve Plug	1
06	484L06	O-Ring	1	28	484L28	Valve Tube Ass'y	1
07	484L07	Return Spring (Y)	1	28A	484L28A	Valve Tube Spring	1
08	484L08	Rear Gland	1	28C	484L28C	O-Ring	1
10	484L10	Nut	1	29	484L29	Lever	1
11	484L11	Spring	1	29P	484L29P	Roll Pin	1
12	484L12	Jaw Pusher	1	30	484L30	Nosepiece 3/32" (2.4mm)	1
13	484L13	Jaw "M"	2		484L30A	Nosepiece 1/8" (3.2mm)	1
14	484L14	Jaw Housing	1		484L30B	Nosepiece 5/32" (4.0mm)	1
14A	484L14A	Jaw Housing Coupler	1		484L30C	Nosepiece 3/16" (4.8mm)	1
15	484L15	Head	1		484L30D	Nosepiece 3/16" (4.8mm)-"T" Rivet (Opt.)	1
15A	484L15A	Lock Nut	1	31	484L31	Swivel Joint Ass'y. (31A-31D) (ns)	1
15B	484L15B	Hanger (Opt.)	3	31A	484L31A	Male Inlet Body (V)	1
16	484L16	Air Cylinder Body	1	31B	484L31B	Female Inlet Body (1/4"-18NPTF)	1
17	484L17	Lock Nut	1	31C	484L31C	Snap Ring	1
17A	484L17A	O-Ring	1	31D	484L31D	O-Ring	3
18	484L18	Packing Ring	1	32	484L32	Deflector	1
18A	484L18A	Front Head Disc	1	33	484L33	Multi-Wrench (A)	1
18B	484L18B	Rear Head Disc	1	34	484L34	Multi-Wrench (B)	1
18C	484L18C	O-Ring	1	35	484L35	Rubber Boot	1
19	484L19	Plunger Rod	1	37	484L37	Mandrel Collector (Opt.)	1
20	484L20	Washer	1				