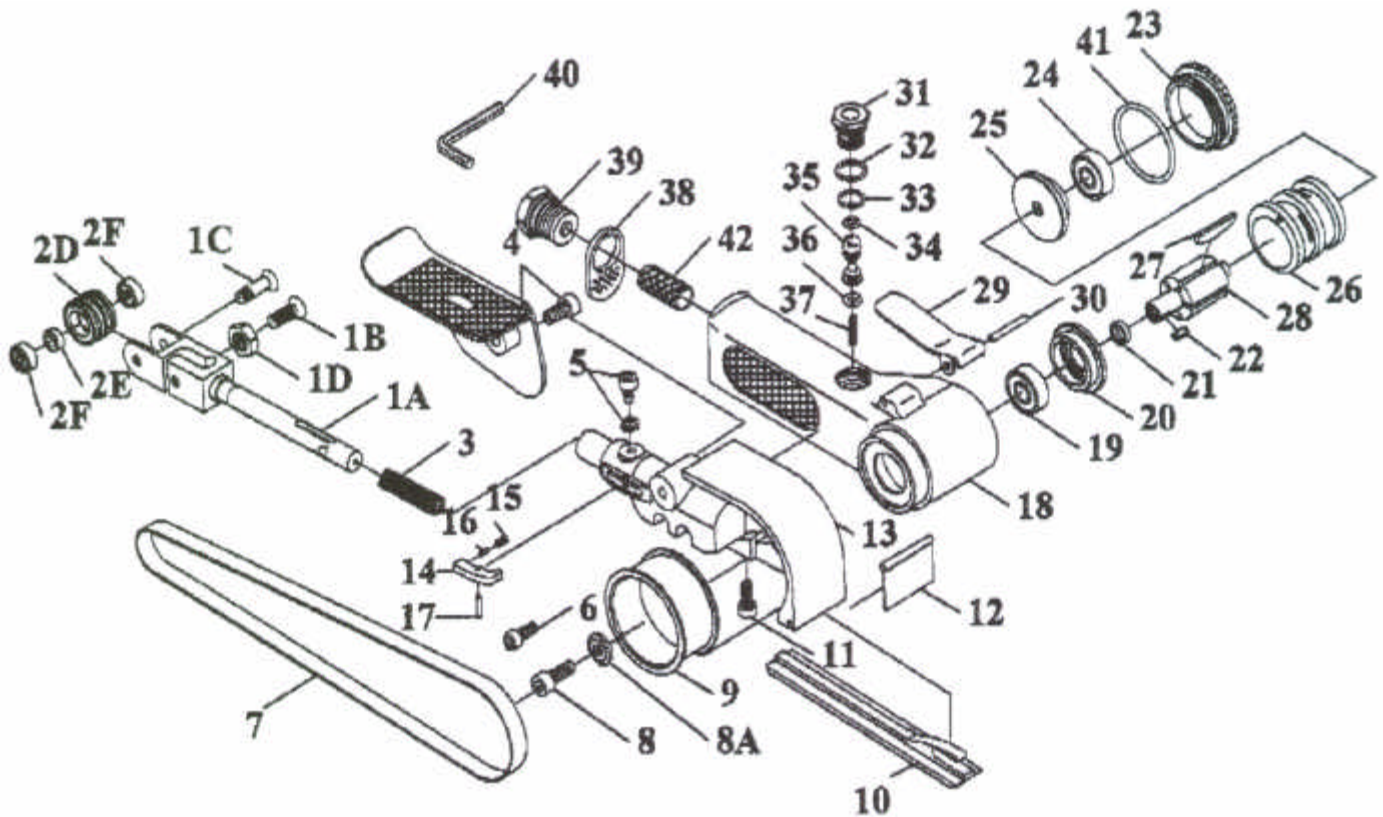




GISON Pneumatic Tools

GP-902A Air Belt Sander



PARTS LIST

✳ : Consuming Part

Item No.	Part No.	Description	Qty.	Item No.	Part No.	Description	Qty.
1A	902A1A	Idle Pulley Bracket Sub	1	19	902A19	Ball Bearing	1
1B	902A1B	Set Screw	1	20	902A20	End Plate B	1
1C	902A1C	Screw	1	21	902A21	Spacer	1
1D	902A1D	Net	1	22	902A22	Sunk Key	1
2D	902A2D	Idle Pulley	1	23	902A23	Cap	1
2E	902A2E	Washer	1	24	902A24	Ball Bearing	1
2F	902A2F	Ball Bearing 686ZZ	2	25	902A25	End Plate A	1
3	902A03	Spring	1	26	902A26	Cylinder	1
4	902A04	Finger Pad Assy	1	27	902A27	Blade Assy (5pc/set)	5
5	902A05	Key Bolt Assy	1	28	902A28	Rotor	1
6	902A06	Hexagon Socket Head	1	29	902A29	Throttle Lever	1
7	902A07	Grinding Belt	1	30	902A30	Lever Pin	1
8	902A08	Hexagon Socket Head	1	31	902A31	Valve Body	1
8A	902A8A	Washer	1	32	902A32	O-Ring	1
9	902A09	Driver Pulley	1	33	902A33	O-Ring	1
10	902A10	Flat Shoe	1	34	902A34	O-Ring	1
11	902A11	Hexagon Socket Head	1	35	902A35	Valve Stem	1
12	902A12	Dust Cover	1	36	902A36	O-Ring	1
13	902A13	Guard Body	1	37	902A37	Valve Spring	1
14	902A14	Tension Bar	1	38	902A38	Deflector	1
15	902A15	Spring	1	39	902A39	Air Inlet	1
16	902A16	Lever Pin	1	40	902A40	Hex. Wrench 4mm	1
17	902A17	Lever Pin	1	41	902A41	O-Ring	1
18	902A18	Housing	1	42	902A42	Wool	1