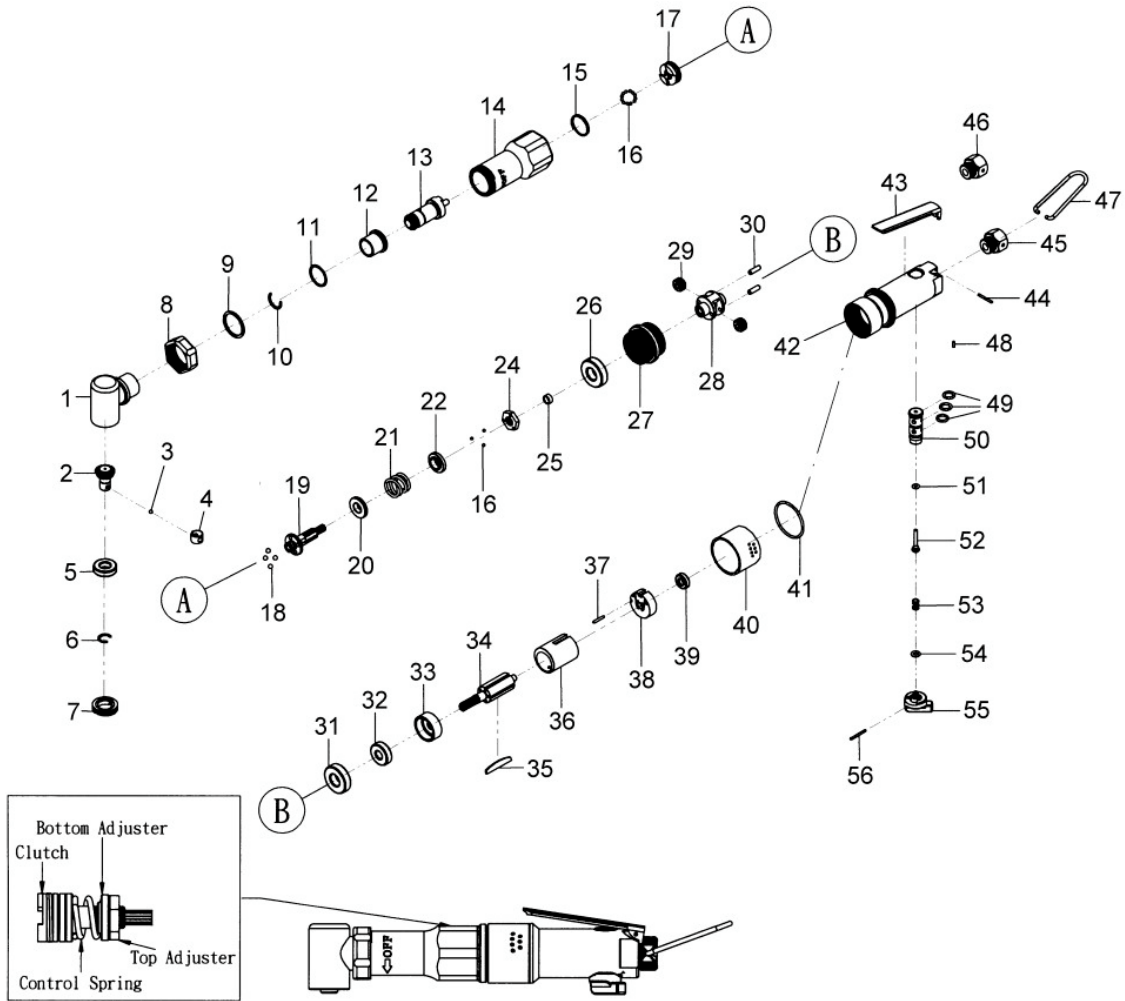




# GISON Pneumatic Tools

## GP-802L90 Air Angle Screw Driver



### PARTS LIST

✳ : Consuming Part

Item No.	Part No.	Description	Qty.	Item No.	Part No.	Description	Qty.
1	802L01	L Head	1	30	802L30	Pin (ø 4x13)	2
2	802L02	Gear	1	31	802L31	Ball Bearing (6001)	1
3	802L03	Iron Ball (ø 1/8")	1	32	802L32	Ball Bearing (608)	1
4	802L04	Ring	1	33	802L33	Front Plate	1
5	802L05	Ball Bearing (6900)	1	34	802L34	Rotor	1
6	802L06	Stopping Wheel (ø 10mm)	1	35	802L35	Rotor Blade	5
7	802L07	Bolt	1	36	802L36	Cylinder	1
8	802L08	Bolt	1	37	802L37	Pin (ø 2x14)	1
9	802L09	Washer	1	38	802L38	Rear Plate	1
10	802L10	Stopping Wheel (ø 13mm)	1	39	802L39	Ball Bearing (696)	1
11	802L11	Washer	1	40	802L40	Muffer	1
12	802L12	Bushing	1	41	802L41	O-Ring (P34x2)	1
13	802L13	Driving Rod	1	42	802L42	Handle	1
14	802L14	Front Cap	1	43	802L43	Switch Lever	1
15	802L15	Retaining Ring	1	44	802L44	Pin (ø 2x18)	1
16	802L16	Steel Ball (ø 2.5mm)	15	45	802L45	Air Inlet (19)	1
17	802L17	Clutch	1	46	802L46	Air Inlet (18)	1
18	802L18	Steel Ball (ø 4mm)	4	47	802L47	Hook	1
19	802L19	Driving Rod	1	48	802L48	Pin (ø 2x6)	1
20	802L20	Washer	1	49	802L49	O-Ring (P8x1.9)	3
21	802L21	Spring	1	50	802L50	Bushing	1
22	802L22	Washer	1	51	802L51	O-Ring (P3x1.9)	1
24	802L24	Bolt	1	52	802L52	Valve Rod	1
25	802L25	Washer	1	53	802L53	Spring	1
26	802L26	Ball Bearing (6001)	1	54	802L54	O-Ring (P5x1.9)	1
27	802L27	Gear Ring	1	55	802L55	Reverse Valve	1
28	802L28	Gear Seat	1	56	802L56	Pin (ø 2x20)	1
29	802L29	Gear	2				