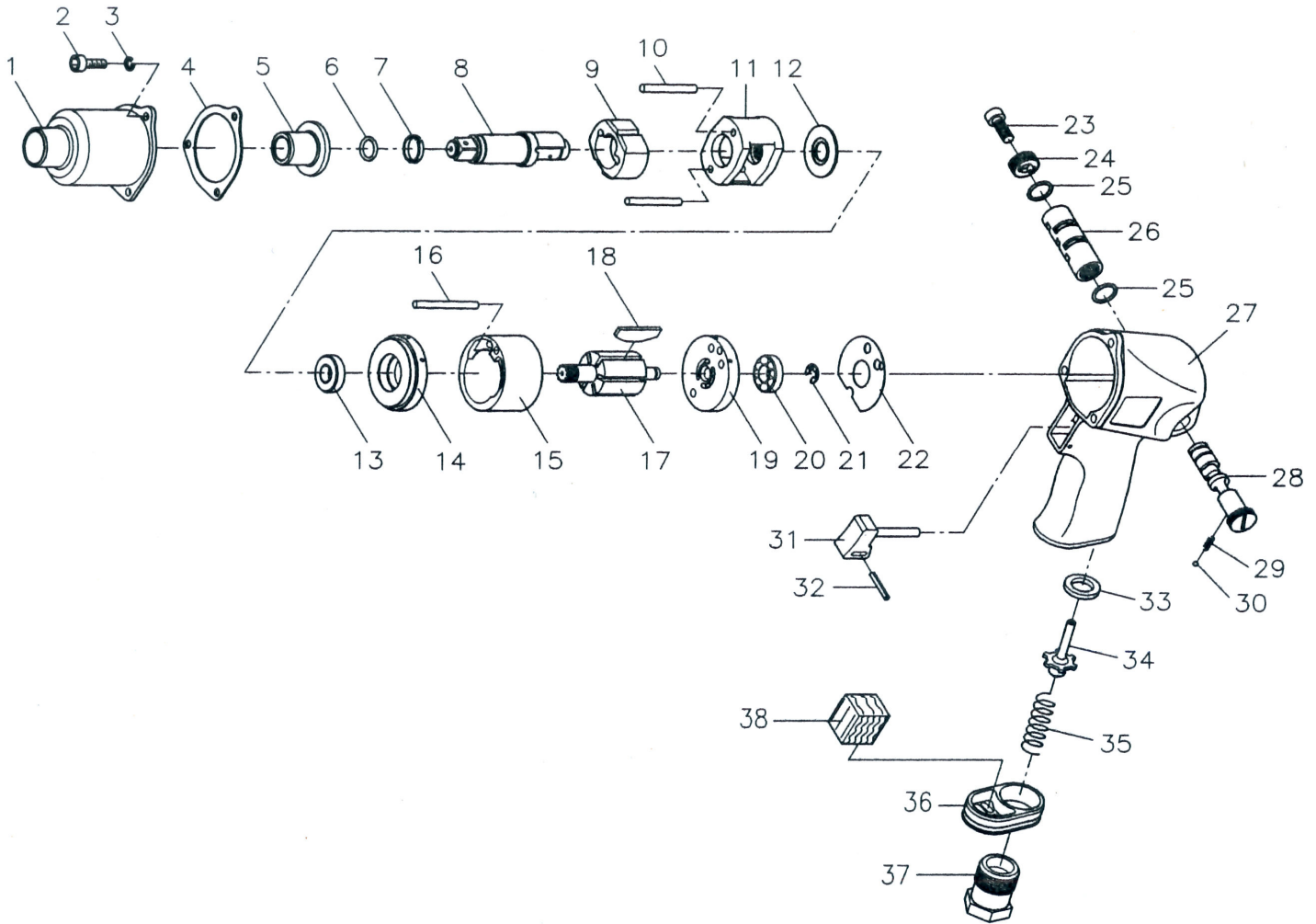




GISON Pneumatic Tools

GW-12C 3/8" & 1/2" Air Impact Wrench



PARTS LIST

✦ : Consuming Part

| Item No. | Part No. | Description | Qty. | Item No. | Part No. | Description | Qty. |
|----------|----------|---------------------------|------|----------|---------------------|--------------------|------|
| 1 | 12C001 | Hammer Case | 1 | 20 | 12C020 | Ball Bearing | 1 |
| 2 | 12C002 | Cap Screw | 3 | 21 | 12C021 | Snap Ring | 1 |
| 3 | 12C003 | Spring Washer | 3 | 22 | 12C022 | Rear Gasket | 1 |
| 4 | 12C004 | Front Gasket | 1 | 23 | 12C023 | Cap Screw | 1 |
| 5 | 12C005 | Anvil Bushing | 1 | 24 | 12C024 | Regulator Knob | 1 |
| 6 | 12C006A | O-Ring (3/8" Anvil) | 1 | 25 | 12C025 | O-Ring | 2 |
| | 12C006B | O-Ring (1/2" Anvil) | | 26 | 12C026 | Valve Sleeve | 1 |
| 7 | 12C007A | Anvil Collar (3/8" Anvil) | 1 | 27 | 12C027 | Motor Housing | 1 |
| | 12C007B | Anvil Collar (1/2" Anvil) | | 28 | 12C028 | Reverse Valve | 1 |
| 8 | 12C008A | Anvil (3/8") | 1 | 29 | 12C029 | Spring | 1 |
| | 12C008B | Anvil (1/2") | | 30 | 12C030 | Steel Ball | 1 |
| 9 | 12C009 | Hammer | 1 | 31 | 12C031 | Trigger | 1 |
| 10 | 12C010 | Hammer Pin | 2 | 32 | 12C032 | Spring Pin | 1 |
| 11 | 12C011 | Hammer Cage | 1 | 33 | 12C033 | Bushing | 1 |
| 12 | 12C012 | Rear Washer | 1 | 34 | 12C034 | Valve Stem | 1 |
| 13 | 12C013 | Ball Bearing | 1 | 35 | 12C035 | Spring | 1 |
| 14 | 12C014 | Front End Plate | 1 | 37 | 12C036 | Exhaust Deflector | 1 |
| 15 | 12C015 | Cylinder | 1 | | 12C037A | Air Inlet (1/4"PF) | 1 |
| 16 | 12C016 | Pin | 1 | | 12C037B | Air Inlet (1/4"PT) | |
| 17 | 12C017 | Rotor | 1 | 12C037C | Air Inlet (1/4"NPT) | | |
| 18 | 12C018 | Rotor Blade | 6 | 38 | 12C038 | Muffler | 1 |
| 19 | 12C019 | Rear End Plate | 1 | | | | |

※ If you need to order parts, please mark both **Parts No.** and **Description.**

<http://www.gison.com>